

eGALLERY MODULE



Tailored views for Gallery Team.

eGallery provides more precise monitoring and playout management control for gallery and control room operators. It allows control room operators to create customized and role-specific views of the rundown with detailed information about the individual functions under their responsibility.

eGallery – Key Benefits

- ✓ **User friendly** – Customized views to display essential data in patterns tailored to particular job functions.
- ✓ **Improved execution** – Select and display details relevant to specific tasks and avoid clutter of non-relevant information.
- ✓ **Expand view** – Preview window shows additional title and more details for a better look ahead.
- ✓ **Safer repositioning** – Grouping all elements of a story together ensures repositioning is smooth.
- ✓ **More control** – Extended control functionality with backward triggering, pause and resume.
- ✓ **Error reduction** – paperless workflow eliminates the clutter and confusion when changes are made.
- ✓ **Improve accuracy** – Privately apply and view notations about any items in the rundown as alerts or reminders.



Different roles, different views

With eGallery each operator can configure a preferred view of the essential rundown data including title, status and timing elements. He may also create custom displays with addition data fields that are most relevant to his role. A video mixer might elect to display video inserts or video signals outputs, while a Director might elect to display different editorial elements.

All rundown information is displayed on every workstation inside the gallery with an individual template for each position. So that everybody is aware of what is coming next and can prepare the individual workflow. All changes while the show are displayed at every workstation in the gallery immediately.

Technology & Business Partners:

Apple	EVS	Quantel
ATP	FKTG	Quantum
Autoscript	Frauenhofer	Qvest Media
Aveco	Gesellschaft	Reply
Avid	HARRIS	S4M
BFE	HP	SGI
Bilgi Elektronik	IABM	SGT
Bit Central	IBM	Siemens
Blue Order	IPTC	Sienna TV
Boxer	IRT	Signum
Brainstorm	MCI Philippines	Silex
Building4media	Medien Akademie	SONY
Chyron	Netorium	Studiotech
Dalet	Omnibus	Thum & Mahr
DAVID Systems	ORAD	TPC
Dimetis	Pebble Beach	VCS
Discovery Sysko	PixelPower	Vizrt



OpenMedia Newsroom members can apply 3 different types of modules. All of them are optional and depend on your special requirements.

Modules are separate items of our Advanced News Management System and specially designed to enrich your individual news workflow.

The Core Server is at the heart of each OpenMedia installation and must be installed first.

About Annova Systems:

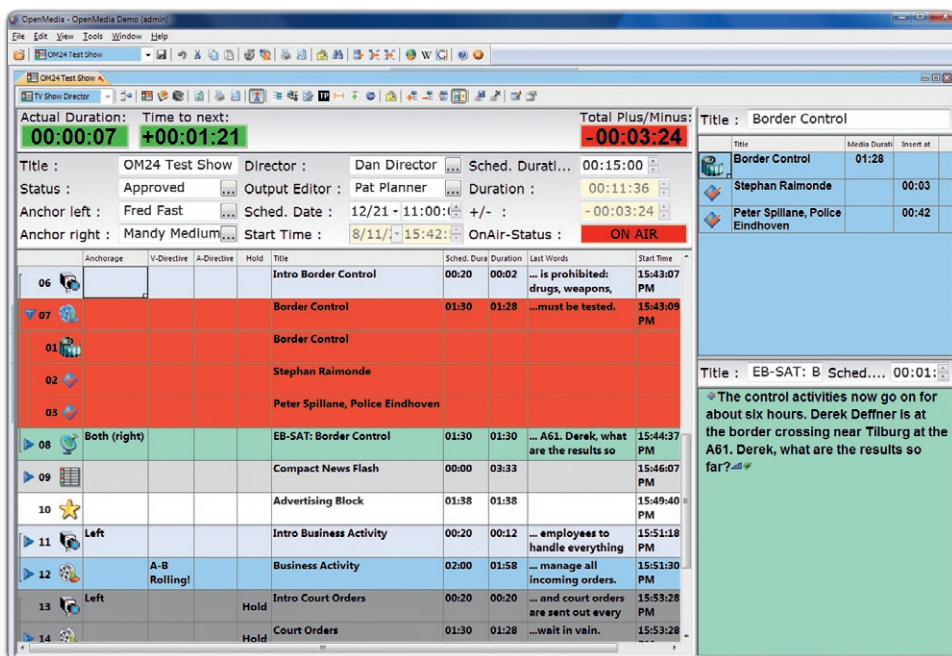
ANNOVA Systems GmbH provides software, development, consulting, and implementation services to the broadcast industry. With almost 20 years of proven experience in news technology and more than 15.000 users, ANNOVA applies its development expertise and hand-on-experience to providing creative and reliable solutions to technology challenges.

OpenMedia 's references include such prestigious broadcasters like WDR, SWR, RTL, Radio France, RFI, Deutsche Welle, NDR, RTSI, Mediaset and many others.

Paperless Gallery for seamless Payout Control

eGallery allows the individual elements of a story (video, CG, etc) to be grouped together and displayed for error-free repositioning, even during a newscast. The preview window displays an additional upcoming title along with expanded data, such as embedded items or any metadata field.

Users can also add private notations or directives. Designed for the most practical use eGallery creates well organized views with role-specific details, eliminating error-prone paper handling.



Example eGallery view

About OpenMedia

OpenMedia is an advanced Newsroom Computer System (NCS) from ANNOVA Systems GmbH that provides maximum flexibility, speed and scalability for handling the essential tasks of broadcast news production – from wire management, scripting, rundown planning and payout control.

OpenMedia is infinitely scalable with a client-server architecture that delivers robust,

reliable performance even with thousands of simultaneous users connected to a single server. Highly configurable, the system can be adapted to meet diverse workflows.

The system is fully compliant with the Media Object Server (MOS) protocol, and the OpenMedia Interface Service (OMIS) framework facilitates the integration of 3rd party systems including video production systems, automation and studio devices.