

CONNECTIVITY MODULES



Expanding newsroom sharing capabilities.

Sharing and exchanging important newsroom information, like wires, planning, rundown or stories has never been easier thanks to OpenMedia's enhancements modules, Connect, WebClient and HotStandby. These powerful modules provide new capabilities for newsroom to access and retrieve data, greatly improving productivity and expanding the value of their information and media assets.

Connect – Key Benefits

- ✓ **Accelerated Information Flow** – Access to multiple OpenMedia servers ensures data is current.
- ✓ **Improved Productivity** – Consolidate group tasks and data in one location for sharing with others.
- ✓ **Controlled Access** – The well-defined rights management structure controls which users can view and alter data across systems.
- ✓ **Optional configurations** – Choose the connection model that best suits your workflow.

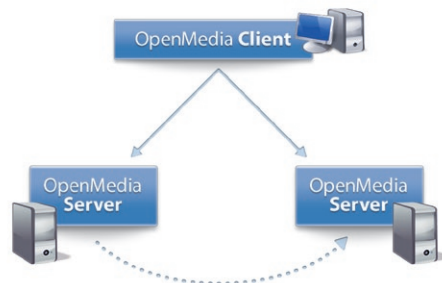
WebClient – Key Benefits

- ✓ **Access Anywhere** – Use an Internet browser from any workstation to get the latest information from your OpenMedia server.
- ✓ **Enhanced filed reporting** – Journalists have same database access and story creation as when on "home" OpenMedia system.
- ✓ **Familiar work environment** – Pane layouts and views for essential tasks follow user from home base into the field.
- ✓ **Systems Security** – Internet access can be limited to select users.

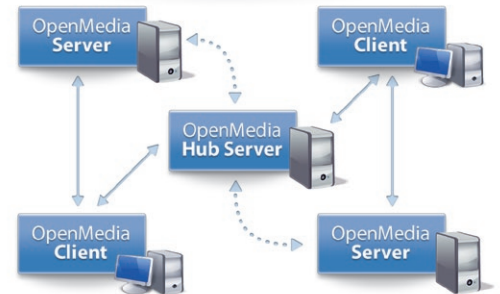
HotStandby – Key Benefits

- ✓ **High availability** – All data from primary-system available on secondary system in real-time.
- ✓ **Improves maintenance** – Reduces system maintenance to a minimum.
- ✓ **Improves software deployment** – Deploy changes of software to servers without down-time of services and a safe fallback scenario.

Single Client – Multi Connect



Hub Connection



OpenMedia Connect Architecture

Flexible Options

OpenMedia Connect can be configured in different ways to address the desired level and type of sharing ability between multiple OpenMedia systems, whether they are located in the same building, across town or across the country.

For instance, an OpenMedia user in a remote bureau could connect via high speed connection from single OpenMedia client application to one or more OpenMedia servers located in different regions. Access and retrieval for document like

rundowns, stories and media objects are based on defined user rights.

Large scale, organization-wide sharing and exchange between different OpenMedia servers can be accomplished with a "hub" configuration. This is particularly effective for centralized services like wire delivery and archives where many different editorial units with separate OpenMedia servers are simultaneously exchanging between the central server and among each other.

Connectivity

OpenMedia enhancement Modules



Technology & Business Partners:

Apple	EVS	Quantel
ATP	FKTG	Quantum
Autoscript	Frauenhofer	Qvest Media
Aveco	Gesellschaft	Reply
Avid	HARRIS	S4M
BFE	HP	SGI
Bilgi Elektronik	IABM	SGT
Bit Central	IBM	Siemens
Blue Order	IPTC	Sienna TV
Boxer	IRT	Signum
Brainstorm	MCI Philippines	Silex
Building4media	Medien Akademie	SONY
Chyron	Netorium	Studiotech
Dalet	Omnibus	Thum & Mahr
DAVID Systems	ORAD	TPC
Dimetis	Pebble Beach	VCS
Discovery Sysko	PixelPower	Vizrt



OpenMedia Newsroom members can apply 3 different types of modules. All of them are optional and depend on your special requirements.

Modules are separate items of our Advanced News Management System and specially designed to enrich your individual news workflow.

The Core Server is at the heart of each OpenMedia installation and must be installed first.

About Annova Systems:

ANNOVA Systems GmbH provides software, development, consulting, and implementation services to the broadcast industry. With almost 20 years of proven experience in news technology and more than 15.000 users, ANNOVA applies its development expertise and hand-on-experience to providing creative and reliable solutions to technology challenges.

OpenMedia 's references include such prestigious broadcasters like WDR, SWR, RTL, Radio France, RFI, Deutsche Welle, NDR, RTSI, Mediaset and many others.

WebClient for Internet Access

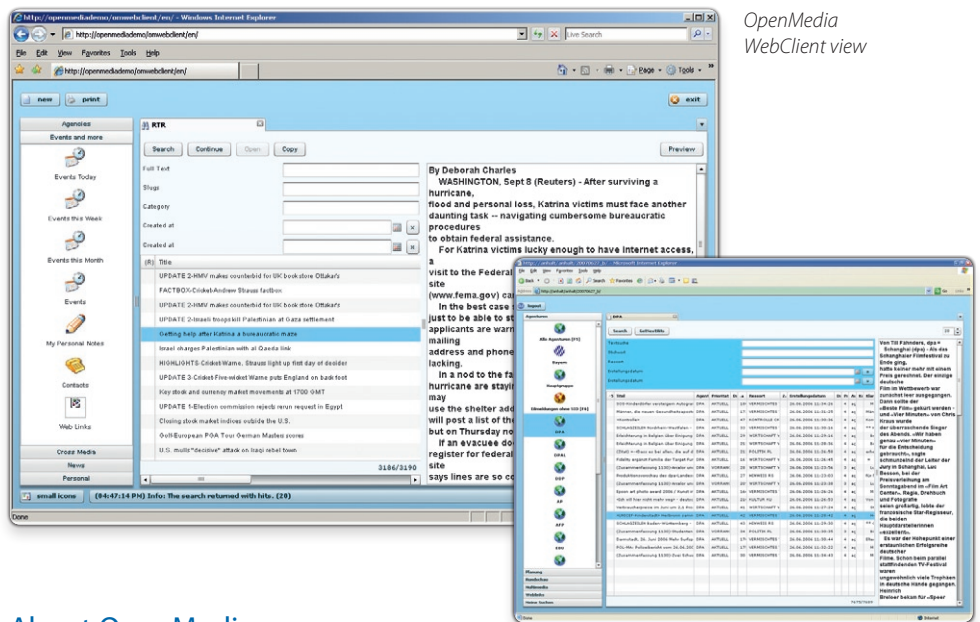
WebClient allows Internet access to OpenMedia systems without requiring an OpenMedia client. This ability is particularly helpful for field reporters who need to know current information or to send data to their OpenMedia system.

From an Internet Explorer or Firefox compatible-browser, they can log in and access entire data pools like wires or events. Using the same settings for story editing as in their "home" OpenMedia environment, journalists can create and modify stories. Of course, system administrators can limit the Internet access to OpenMedia.

HotStandby

OpenMedia systems are hosted redundant with a real hot-standby, where the primary-system and a backup-system run simultaneously. All data is mirrored to the backup-system in real time, so that both systems contain identical information.

HotStandby guarantees a maximum of availability and ensures system-maintenance without interruptions of the services. No more need of inspections windows. Software-changes can be deployed easily with a minimum of risk.



OpenMedia WebClient view

About OpenMedia

OpenMedia is an advanced Newsroom Computer System (NCS) from ANNOVA Systems GmbH that provides maximum flexibility, speed and scalability for handling the essential tasks of broadcast news production – from wire management, scripting, rundown planning and playout control.

OpenMedia is infinitely scalable with a client-server architecture that delivers robust,

reliable performance even with thousands of simultaneous users connected to a single server. Highly configurable, the system can be adapted to meet diverse workflows.

The system is fully compliant with the Media Object Server (MOS) protocol, and the OpenMedia Interface Service (OMIS) framework facilitates the integration of 3rd party systems including video production systems, automation and studio devices.



ANNOVA Systems GmbH
Dachauer Str. 124
80637 Munich
Germany

Phone: +49-89-158 155-0
Fax: +49-89-158 155-555
E-Mail: info@annova.tv
Web: www.annova.tv